

Contents

		P
Chapter 1	Festivals and Events in Kurobe	1
1	Ebisu Festival	2
2	Snow Carnival	3
3	Torch Festival	4
4	JinJin Festival	5
5	Nibunagashi in Nakajin	6
6	Tanabata-nagashi in Oyama	7
7	Mikoshi Festival in Taie	8
8	Kutsukake Shishimai	9
9	Walking Tour in Ikuji	10
10	Meisui Marathon	11
11	Everybody Sports Day	12
Chapter 2	Nature in Kurobe	13
1	Meisui Park	14
2	Kurobe River	15
3	Aimoto Bridge	16
4	Unazuki Dam	17
5	Sogadake and Byogadake	18
Chapter 3	Delicious Food in Kurobe	19
1	Toretatekan, a Fish Market	20
2	Kurobe Brand	21
3	Mizudango	22
4	Makibanokaze Farm	23
5	Masunosushi	24
6	Wagashi - Japanese Sweets	25
Chapter 4	Transportation in Kurobe	26
1	Toyama Chiho Railway	27
2	Hokuriku Bullet Train	28
3	Torokko Train	29
Chapter 5	Culture Facilities in Kurobe	30
1	Kurobe Art Museum	31
2	Selene Art Museum	32
3	Colare	33
4	Yoshida Science Museum	34
5	Kurobe City Hall	35
6	Kurobe Gym	36
7	Northern Territories Museum	37

Chapter 6 Famous Places in Kurobe		38
1	Shozu in Ikuji	Shozu Is Delicious! 39
2	Ikuji Naka-bashi	Moving Bridge 40
3	Ikuji Lighthouse	A Traditional Lighthouse! 41
4	Kurobe Fishing Port	A Fishing Port Rich With Fish 42
5	Kirara Waterfall	Beautiful Waterfall 43
6	YKK	World Factory 44
7	KOKO Kurobe	A Fun Facility 45
8	Unazuki Onsen	These Hot Springs are Cool 46
9	Unazuki Foot Baths	“Poka Poka” Cozy Foot Baths 47
10	Yamabiko Promenade	The Best Place to Take Beautiful Pictures 48
11	Kurobe Gorge	The Deepest Valley in Japan 49
Chapter 7 Kurobe History		50
1	Hakone Shozu	Toyama’s Delicious Water 51
2	100-Year Old Sakura	The Tree That has Been Watching Over Kurobe for a Century 52
3	Niiharu Shrine	The Sunken Village 53
4	Mishima Shrine	One Thousand Years of History 54
5	Sho-okaku	Hokuriku’s Historic Garden 55
6	Yamamoto House	Travel Back in Time to Life in the Edo Period 56
7	Wakaguri Castle	Kurobe’s Hidden Gem 57
8	Junikanno Canal	Lots of Beautiful Nature 58
Chapter 8 Let’s go out to play !		59
1	Ikuji Beach	Beautiful Sea 60
2	Aramata Shore	A Beautiful Shore 61
3	Oshima Campsite	Let’s Go Camping! 62
4	Ishida Beach	A Beautiful Beach 63
5	Ishida Fish Arena	Everyone Can Enjoy Fishing 64
6	Oshima Park Golf Site	Everyone Can Enjoy This Golf Course 65
7	Nakanokuchi Park	A Park Rich in Nature 66
8	Miyano Athletic Park	A Famous Place for Cherry Blossoms 67
9	Unazuki Ski Resort	The First Ski Resort in Toyama with a Lift 68
Chapter 9 Junior high schools in Kurobe		69
1	Seimei Junior High School	A Fresh and Bright Junior High School 70
2	Meiho Junior High School	A Bright School for Bright Students 71

Chapter 1

Festivals and Events in Kurobe



Ebisu Festival

Big Fireworks Display



Ebisu festival is 900 years old. The Ebisu Festival has a fireworks display. Kurobe has more than 3 fireworks festivals. This festival is one of them. It is held in the Ikuji area in late July. About 1,000 fireworks are set off at this festival. This festival is held to pray to the god of the sea for good catches and no accidents at sea. (Seimei J.H.S.)

Q1 When is the festival held?

Snow Carnival

Carnival of Snow and Fire



On the first Saturday in February the Snow Carnival is held at Unazuki Onsen. The carnival is a snow and fire festival that has been held since ancient times. About 5,000 visitors come every year. Each person can take a torch and stroll around the hot spring town. About 250 torches are used in the walk. There are also some performances by high school students. In addition, about 2,000 fireworks are launched. On a cold winter night, watching beautiful fireworks while eating hot pot is the best feeling. During the carnival, a snow sculpture contest is also held. You can see snow sculptures of anime characters such as Totoro in the town. Please join us for the Unazuki Snow Carnival!(Meiho J.H.S.)

Q2 How many torches are used in the torch walk?

A1 In late July.

Torch Festival

Run Through the Flames!



The Taimatsu (Torch) Festival is held to pray for a safe fishing and rich catch. 42-year-old men carry a portable shrine called "Mikoshi" and run over the fire. The climax is at midnight. The Ikuji Torch Festival is filled with hopes for a safe fishing and rich catch. It is held in October every year in the area of Ikuji. This festival started 550 years ago.(Seimei J.H.S.)

Q3 What do people pray for in the Torch Festival?

A2 About 250 torches.

JinJin Festival

A Festival That Lights up the Night



The JinJin Festival is a popular event for the people of Kurobe. Many people from all over Toyama Prefecture attend every year. It's a traditional event held for three days from June 24th to June 26th and has been going on for over 80 years. There are many food stalls at the festival. They continue along the road for more than 100 meters. You can try a wide variety of snacks including baby castella (small bite-sized cakes), yakisoba, and candy apples. It's fun to watch the food being made right in front of you. You can also win prizes by playing interesting games. The bright and lively atmosphere continues well into the night. Please go to this festival when you come to Kurobe!(Meiho J.H.S.)

Q4 How long has the festival been going on?

A3 They pray for a safe fishing and rich catch.

Nibunagashi in Nakajin

Interesting Event Along the Fuse River



The Nibunagashi in Nakajin started in 1994. Local children take part in this event on the last Sunday evening of every July. It is held at Fuse River in the Nakajin area. It is an event in which drowsiness and other traits that hinder labor (such as farm work in the summer) are symbolically represented in a homemade fake boat and sent away into the river. (Seimei J.H.S.)

Q5 When is Nibunagashi in Nakajin?

A4 For 80 years.

Tanabata-nagashi in Oyama

Let's Drive Away Impurity and Calamity!



Everyone in the area of Oyama makes ships and dolls called "Anesama-ningyo," or "older sister dolls" at home. Kids float them in the river. People do this event on July 7th every year. It is believed that they can drive away impurity and calamity by doing this event. (Seimei J.H.S.)

Q6 Why do people do this event?

A5 On the evening of the last Sunday every July.

Mikoshi Festival in Taie

Wasshoi-Wasshoi!



The Mikoshi Festival is held at Jinmei Shrine and Hachiman Shrine in the Taie area on October 16th every year. This festival started 40 years ago. A mikoshi is a "palanquin" that worships the divine spirit. Mikoshi is pulled by wheels. People shout "Wasshoi-wasshoi!" during the festival. Traditional flutes and drums are also played by elementary school students during the festival. Nursery school kids pull the Mikoshi. It is interesting to see this event. So, please come and try to see it! (Seimei J.H.S.)

Q7 Who pulls the Mikoshi?

A6 Because it is believed that they can drive away impurity and calamity.

Kutsukake Shishimai

A Dance Wishing for Happiness



For two days in the fall there is a festival in Kutsukake where people celebrate the harvest. People of all ages join and dance in unison to the sounds of drums and flutes. Lions, Tengu (mythical Japanese creatures) and a Gannen (a person wearing a scary handmade mask in order to drive away bad luck) appear and perform elaborate dances for the spectators. They may also make small children cry. Dancers use small swords and beautifully decorated umbrellas during their performance. After dancing, the leader holds up some gifts of appreciation and addresses the donors in a loud voice. It's an impressive ceremony that you shouldn't miss!(Meiho J.H.S.)

Q8 What characters/figures appear in the dance?

A7 Nursery school kids do.

Walking Tour in Ikuji

Popular Event in Kurobe!



In the event of "Walking Tour in Ikuji" held in May, you can enjoy a festival. There, you can try many kinds of food such as shaved ice, castella, and a traditional Japanese dessert called "Mizudango". Also, if you come to this event, you can play interesting games. Come and have fun all day at the Walking Tour in Ikuji! (Seimei J.H.S.)

Q9 When does this event take place?

A8 Lions, Tengu and Gannen appear.



Meisui Marathon

Famous marathon in Kurobe



The Meisui Marathon is a running event held in May every year. It is known as "The Carter Memorial Kurobe Meisui Marathon." This event was named after the 39th President of the United States, Mr. Jimmy Carter, who visited Kurobe in 1984. He was a former president of the US, His hobby was jogging, He joined at the first competition. (Seimei J.H.S.)

Q10 Why was Meisui Marathon named "Carter Memorial"?

A9 It's held in May.

Everybody Sports Day

An Activity for all Ages/ Kurobe's Sports Celebration



Everybody Sports Day is an event held at Kurobe Gym and Kurobe Park during the fall. At this event, you can try different kinds of sports including archery, canoeing, park golf, and an obstacle course called 'Mini-Sasuke'. Mini-Sasuke is especially popular because it is very challenging. You can also see several dance performances including hula, hip hop and Yosakoi (a traditional Japanese dance normally performed during festivals). There is also a bingo tournament, and if you're lucky, you can win a prize. Outside, there is a flea market with many stalls where you can buy goods and eat delicious food. It's a very lively event that all ages can enjoy. (Meiho J.H.S.)

Q11 Where is this event held?

A10 Because Jimmy Carter, the 39th President of the US, visited Kurobe.

Chapter 2

Nature in Kurobe



Meisui Park

Beautiful Water



Meisui Park is located in the area of Ikuji. There is delicious spring water there and you can drink it. The water is cool, so we especially recommend that you visit in the summer. There are many kinds of plants there too. You can also enjoy beautiful nature. (Seimei J.H.S.)

Q12 Which season is recommended to visit Meisui Park?

A11 At Kurobe Gym and Kurobe Park.

Kurobe River

A Beautiful River



The Kurobe River is one of the 100 best rivers with clear water in Japan. It supports the local industries. It goes from the Northern Alps to Toyama Bay. The total length is 2,924 meters. It is a first class river. A variety of fish such as sweetfish, salmon, and tomiyo (stickleback) live there. (Seimei J.H.S.)

Q13 What does Kurobe River support?

A12 In the summer.

Aimoto Bridge

The Cornerstone of Kurobe



Aimoto Bridge is located at the entrance of the Kurobe Gorge. The name “Aimoto” means the cornerstone of the alluvial fan. It is famous for its beautiful and unique structure. It was even selected as one of Japan’s 100 great bridges in 1998. From the Edo period to the Meiji period, the bridge was made of wood and measured 61.42 meters long and 3.62 meters wide. It was constructed from large pieces of wood that were positioned diagonally to support the bridge. The current bridge is the 12th generation. You can learn more about the original Aimoto bridge at Unazuki Yugakukan Museum. If you come to Kurobe City, please visit the historic Aimoto bridge and enjoy the beautiful views. (Meiho J.H.S.)

Q14 Where can we learn about the old Aimoto bridge?

A13 It supports the local industries.

Unazuki Dam

A Beautiful Dam Shining in Aquamarine Blue



Unazuki Dam can be reached by either taking the Torokko train or a low-speed bus called EMU. The fall season is a recommended time to visit as the changing leaves create a great view. The water intake structure built into the river looks like a beautiful castle. On a sunny day, the dam reflects the sun and produces a bright, aquamarine blue color. On the lake near the dam there is also a bridge built for monkeys to pass over and you can sometimes see cute monkeys crossing it. (Meiho J.H.S.)

Q15 What animal is the bridge by the dam built for?

A14 At Unazuki Yugakukan Museum.

Sogadake and Byogadake

Let's Go to the Mountains!



Sogadake is a mountain which is 1,855 meters tall. From the end of the winter until the beginning of the summer, you see some snow prints of monks, horses, rabbits, and so on, on the surface of the mountain. This mountain was chosen as one of the top 100 mountains in Toyama by the Toyama Prefectural Climbing Federation. On the other hand, Byogadake is also a mountain in Kurobe, which is 861 meters tall. It has difficult places to climb. However, it also has a beautiful park for people to visit as well. If you come to these mountains, you can enjoy the beautiful scenery. You can also see colorful leaves in the autumn.(Seimei J.H.S.)

Q16 How tall are Sogadake and Byogadake?

A15 It is built for Monkeys.

Chapter 3

Delicious Food in Kurobe



Toretatekan, a Fish Market

Everyday There Are Fresh Fish!



Toretatekan is a fish market in Ikuji area. You can buy fresh fish caught in the Japan Sea and treated at Ikuji Fishing Port nearby. There are many types of fish there and it is a popular shop among tourists. So, a lot of them come and buy the fresh fish as souvenirs. In addition, this market sometimes has an open lesson of fish preparation which anyone can join. You can experience not only how to prepare fish, but also shellfish in the lesson. It is especially good for beginners who are not good at seafood cooking.
(Seimei J.H.S.)

Q17 What is sold at Toretatekan?

A16 Sogadake is 1,855 meters tall, and Byogadake is 861 meters tall.

Kurobe Brand

Delicious to Eat



Mizu-dango is a traditional Kurobe food. They are very fresh and delicious. But, be careful as you can sometimes choke on them. Masu-no-sushi is another local cuisine. It's a type of pressed sushi made with sea trout and vinegar without fermentation. Kurobe White Leek is also a food cultivated in Kurobe. The taste is more delicate than other types of leek. It's great addition to many dishes such as miso soup and hotpot. Kurobe Meisui Pork is delicious as well. It is very soft and juicy.(Seimei J.H.S.)

Q18 Why should you be careful when eating water dumplings?

A17 Fresh fish.

Mizudango

Kurobe's Cool Summer Snack



Mizudango is a local Kurobe snack that is made with rice flour and potato starch powder. It is a popular summer sweet because it is served cold or chilled. The dumpling is bite-sized and easy to eat and the texture is sticky and soft. Sweet and salty green soybean flour is a perfect topping for Mizudango. You can buy it at many places in Kurobe, including local supermarkets and stores. Please try Mizudango this summer! (Meiho J.H.S.)

Q19 What season is it delicious to eat?

A18 Because you sometimes choke on them.

Makibanokaze Farm

Let's have lots of fun on the Farm



Makibanokaze Farm is an excellent place to try delicious local food, interact with animals, and enjoy panoramic views of Kurobe. The highest point of the farm stands at 425 meters and you can enjoy a scenic view of the surrounding scenery from there. If it is sunny you can see Toyama Bay and the Kurobe River alluvial fan. From April to November, several animals such as rabbits, sheep and goats can be seen on the farm. There are also about 250 cows raised here and you can buy many fresh-made dairy products such as pudding, baked sweets, and soft serve ice cream. For a more hands-on experience, you can milk the cows and make ice cream from scratch. Everyone from children to adults can have fun at Makibanokaze Farm! (Meiho J.H.S.)

Q20 What is the highest point?

A19 In summer.

Masunosushi

Super Sushi



Masunosushi is a traditional type of sushi that is one of Toyama Prefecture's specialties. It consists of trout and vinegared rice that has been wrapped in bamboo leaves and then pressed.

Masunosushi is available in all shapes and sizes and you can find double-layered varieties as well. It's delicious even without soy sauce. The vibrant pink and green colors are beautiful. They look like a blooming flower. It can be eaten at celebrations. If you try it, you will surely like it!(Meiho J.H.S.)

Q21 Where is it a local dish?

A20 It is 425 meters.

Wagashi - Japanese Sweets

Discover The Secret of Their Deliciousness



Japanese sweets are called wagashi. They often use anko, a sweet red bean paste, and many of the sweets have a squishy or soft texture. Wagashi can be pale pink, brown, white or green. While they are not brightly colored, they have an understated, elegant design that resembles a work of art. They are generally not too sweet and can be eaten in one or two bites. Green tea also goes well with Japanese sweets. Some Japanese sweets show the seasons through their designs and ingredients. Be sure to try some delicious wagashi in Kurobe when you visit! (Meiho J.H.S.)

Q22 What is commonly used in Japanese sweets?

A21 In Toyama prefecture.

Toyama Chiho Railway

Comfortable and Colorful Trains



The Toyama Chiho Railway is a comfortable way to get around Kurobe. The train moves at a leisurely pace so you can enjoy the view from the window. There are 16 stations in the Kurobe City area. Many of the trains have interesting designs. For example, there is a yellow and green train that the locals call “the pumpkin train.” Some trains are designed with the image of a ‘Raicho’ or grouse, a rare local bird. Others have designs featuring the local soccer team, Kataller Toyama. (Meiho J.H.S.)

Q23 How many stations are in the Kurobe City area?

A22 Sweet red bean paste.

Hokuriku Bullet Train

The Quick and Convenient Way to Kurobe



The Hokuriku Bullet Train debuted in Kurobe in March 2014. You can go to Tokyo in about 2.5 hours from Kurobe-Unazuki Onsen Station. It runs at a maximum speed of 260 kilometers per hour. The 12-car train is equipped with the latest handicap accessible features. The cool, modern design is interesting to look at and many people take videos of the train's arrival. It's a comfortable and convenient way to travel around Japan.(Meiho J.H.S.)

Q24 What is the speed of the Hokuriku Bullet Train?

A23 16 stations.



Torokko Train

All Aboard!



There are four areas that the Torokko train passes through and each provides unique attractions. There is something to enjoy in every season with fresh greenery in the spring and summer, changing leaves in the fall, and snow in the winter. There are also various footbaths and hot springs around Kurobe Gorge. On the train, you can choose between open passenger cars and passenger cars with windows. The open cars allow you to feel the breeze and immerse yourself in the environment, while the windowed space allows you to relax comfortably inside. There are events that children can enjoy such as a stamp rally where you can collect special stamps at some stations. Come and take a ride on the Torokko train!(Meiho J.H.S.)

Q25 What can you enjoy in the fall when riding the Torokko train?

A24 260 kilometers per hour.

Chapter 5

Culture Facilities in Kurobe



Kurobe Art Museum

Museum in Nature



Kurobe Art Museum opened in 1994. The building is designed to allow natural light inside. You can feel the tranquil atmosphere. Also, you can see the beautiful mountains. You can see all four seasons from the window. During an exhibition, you can enjoy seeing a lot of works that advocate peace.(Seimei J.H.S.)

Q26 What kind of works are in the museum?

A25 The changing leaves.

Selene Art Museum

A Beautiful Building Woven into the Gorge



Selene Art Museum is a 5-minute walk from Unazuki Onsen station. The design of the building is a round shape in the image of Selene, the goddess of the moon. The art museum mainly exhibits the works depicting the nature of Kurobe and the charm of the gorge. There are also large halls and conference rooms with up to 700 seats. They occasionally hold fun and interactive events where you can make accessories and other goods. At the café on the second floor, you can relax while drinking coffee made with Kurobe's famous water. From the terrace, you can enjoy beautiful views of the surrounding nature and mountains. (Meiho J.H.S.)

Q27 What can you see from the terrace?

A26 There are peaceful works.

Colare

A Welcoming Place for Kurobe Citizens



Colare is an arts center that is a popular gathering place for the people of Kurobe. The building has a very beautiful design with a bright pink façade and a glass-enclosed area. The name Colare comes from the Toyama dialect meaning “welcome” or “come here”. Colare often hosts exhibitions, concerts and other events in the main hall. There are many services available to the public and you can even rent musical instruments here. Colare has some places where you can read and concentrate on your studies too. There is also a restaurant which has many delicious dishes. There are many things to enjoy at Colare and it is sure to make visitors smile.(Meiho J.H.S.)

Q28 What does Colare mean in the Toyama dialect?

A27 Beautiful views of the surrounding nature and mountains.

Yoshida Science Museum

A Science Museum that everyone can enjoy



This museum is in the area of Muratsubaki in Yoshida, Kurobe. It opened in 1986. You can experience outer space in the planetarium dome located within the museum. You can watch science movies in the planetarium too. A lot of students come and enjoy them. You can also learn about the nature surrounding Kurobe.(Seimei J.H.S.)

Q29 Where in Yoshida Science Museum can we experience outer space?

A28 “Welcome” or “Come here”.

Kurobe City Hall

An Important Place for Kurobe's Citizens



Kurobe City Hall was built in 2015 and can be found near Higashi-Mikkaichi station. It is a four-story modern building with state-of-the-art facilities. Inside, there is a general information center and you can get guidance on handling administrative affairs. There is also a cafeteria and dining room which can be used during lunch time. Outside, you can rent a bicycle or charge an electric car quickly. There is also a square lined with Yoshino cherry trees which is sometimes used for events such as flea markets. It is an important place for the citizens of Kurobe. (Meiho J.H.S.)

Q30 When was city hall built?

A29 In the planetarium.

Kurobe Gym

Gymnasium for Various Sports



Kurobe gym is in the area of Horikiri. Many competitions for sports (such as volleyball and basketball) are held there. In addition, many events (such as Kurobe Fair and Meisui Marathon) are hosted there every year. If you go to this gym, please enjoy playing a lot of sports in Kurobe.(Seimei J.H.S.)

Q31 Where is Kurobe Gym?

A30 In 2015.



Northern Territories Museum

Learn about History!



This museum opened in 2020. It is located in the area of Ikuji. Originally, Kurobe and the Northern Territories Kurobe people lived in had exchanges. It was built to let various people know the history of the Northern Territories. Admission and parking are free.(Seimei J.H.S.)

Q32 When did Northern Territories Museum open?

A31 It's in the area of Horikiri.

Chapter 6

Famous Places in Kurobe



Shozu in Ikuji

Shozu Is Delicious!



Shozu is clear spring water which gushes out of a lot of spots in Kurobe City. You can especially see a lot of shozu spots in the seaside of Ikuji. Shozu is delicious, so it is loved by many people. Shozu can be used for drinking, cooking, and washing vegetables. Please drink this delicious water. (Seimei J.H.S.)

Q33 Where are a lot of shozu spots?

A32 It opened in 2020.

Ikuji Naka-bashi

Moving Bridge



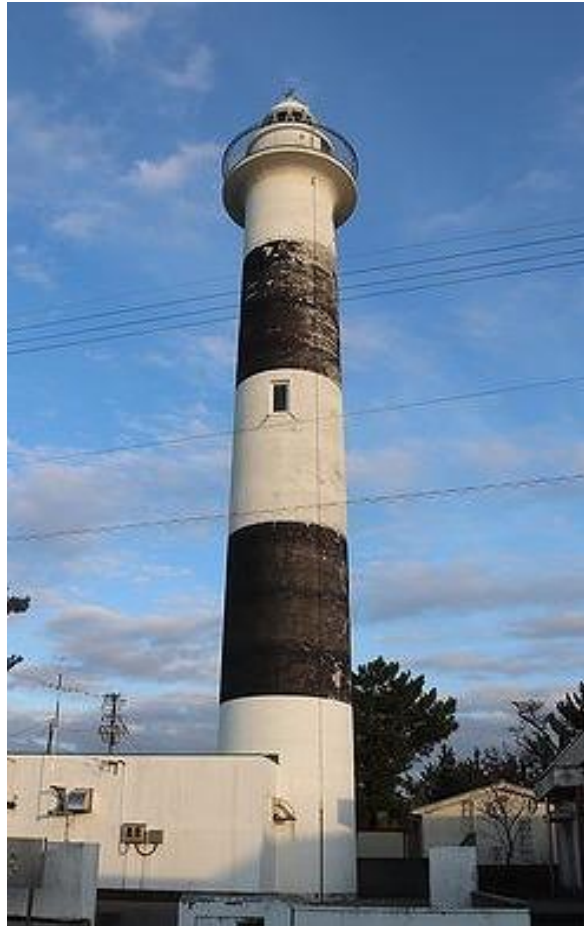
Ikuji Naka-bashi is a moving bridge made in 1982. This bridge was made to expand the Kurobe Fishing Port area. It is located in Aimoncho in the area of Ikuji. Ikuji Naka-bashi rotates to allow boats to pass through. This is one of the most unique bridges in the world. (Seimei J.H.S.)

Q34 What is the location of Ikuji Naka-bashi?

A33 In the seaside of Ikuji.

Ikuji Lighthouse

A Traditional Lighthouse!



This is a black and white lighthouse. It is the oldest lighthouse in Toyama Prefecture. If you come here, you can see beautiful scenery. There is a festival held here in the fall. It is fun. There are illuminations in this festival. They are so beautiful. There is a game corner and a mini concert too. (Seimei J.H.S.)

Q35 What color is Ikuji Lighthouse?

A34 It's Aimonio-cho in Ikuji.

Kurobe Fishing Port

A Fishing Port Rich With Fish



Kurobe Fishing Port was called "Ikuji Fishing Port" a long time ago. It was in the area of Ikuji. So, it was named that. There is an unusual bridge near this fishing port. It is a fishing port rich with fish. Kurobe Fishing Port was completed in 1937. It has a history of about 90 years. If you come to Kurobe, please visit this fishing port and see a lot of fresh fish.(Seimei J.H.S.)

Q36 Why was Kurobe Fishing Port called "Ikuji Fishing Port"?

A35 The lighthouse is black and white.

Kirara Waterfall

Beautiful Waterfall



Kirara Waterfall is an artificial waterfall in Kurobe. It was made and is currently located in the city park. You can catch crayfish near the waterfall. The area around Kirara Fountain is good for walking breaks. If you take a walk here in the evening, you can see a beautiful sunset. When it is lit up at night, it is also very beautiful.(Seimei J.H.S.)

Q37 What can you catch near the waterfall?

A36 Because it was in the area of Ikuji.

YKK

World Factory



This factory is located not only in Kurobe City, but also in other parts of Japan. YKK manufactures windows, window frames, and doors. They develop and produce everything from materials to products. YKK Center Park is in the factory area. It has a cafe and lounge. You can experience zipper-making there too.(Seimei J.H.S.)

Q38 What can you do at YKK Center Park?

A37 You can catch crayfish.



KOKO Kurobe

A Fun Facility



KOKO Kurobe opened in the spring of 2022. Here, you can eat products made with ingredients from Kurobe. KOKO Kurobe has a delicious crepe shop. It has seasonal crepes, so you can enjoy each season. Trampolines are especially popular with children, so everyone can enjoy. It is an attractive place packed with the charm of Kurobe. So, please come and visit KOKO Kurobe!(Seimei J.H.S.)

Q39 What is popular with children in KOKO Kurobe?

A38 You can experience zipper-making.

Unazuki Onsen

These Hot Springs are Cool



Unazuki Onsen is located at the entrance of the Kurobe Gorge. Upon arriving at Unazuki Onsen station, you can see a large fountain outside. All throughout Unazuki Onsen there are hot springs and open-air baths for visitors to enjoy. Hot springs are good for your skin. From the open-air bath you can see beautiful scenery and sometimes the Torokko train can be spotted in the distance. There is even a hidden hot spring that can only be accessed by the Torokko train. Unazuki Onsen is also a popular spot in summer where people can enjoy a fireworks display. There are many nice restaurants in town featuring local specialties. We especially recommend the cheesecake. By all means, please go. (Meiho J.H.S.)

Q40 What are the outdoor baths of Unazuki onsen good for?

A39 Trampolines.

Unazuki Foot Baths

“Poka Poka” Cozy Foot Baths



Unazuki Onsen is dotted with free footbaths that you can easily visit. There are four footbaths in the Unazuki Onsen resort area and you can wait for the Torokko train while soaking in the baths. If you take the Torokko train to Kurobe Gorge there are three more footbaths you can enjoy along the route. There is even a footbath near a café where you can relax while eating ice cream. The footbath is a perfect place to relax your tired feet, enjoy the beautiful scenery and create memories on your trip. You should come to Unazuki Onsen and enjoy the footbaths!(Meiho J.H.S.)

Q41 How many footbaths are there in Unazuki Onsen, including areas where you can go by Torokko train?

A40 Beautiful skin.

Yamabiko Promenade

The Best Place to Take Beautiful Pictures



Yamabiko Promenade, which was completed in 1925, is a great place for taking pictures of beautiful scenery. Some parts of the trail are actually old pathways that the Torokko train once used. The track's iron bridges and tunnels are open to the public. The promenade is about one kilometer long. It takes about 30 minutes to walk. It is usually not too crowded and you can enjoy a quiet stroll in the tunnel. On the promenade, you can see Unazuki Dam, and if you are lucky, you can catch sight of the Torokko Train passing over the red bridge. If you do see a passing train, be sure to wave to the people onboard! Please stop by and visit. You are sure to make some good memories.(Meiho J.H.S.)

Q42 When was the Yamabiko promenade completed?

A41 Seven footbaths.

Kurobe Gorge

The Deepest Valley in Japan



Kurobe Gorge is a V-shaped gorge with a depth of 1,500 to 2,000 meters, making it the deepest gorge in Japan. It is a wonderful place to admire the changing seasons. Autumn is our recommended time to visit as the leaves of the trees burst with color and create a picturesque environment. The gorge is accessible via the Torokko Train. You can enjoy a leisurely ride aboard the train while viewing the stunning scenery. Some highlights include a bridge built for monkeys, a beautiful snow bank which can even be seen even in summer, and a jagged rock formation that looks like it's eating people who are passing by! If you are lucky, you can see some rare animals such as the Japanese serows, a type of antelope, or grouses, the official bird of Toyama. In addition, there are many hot springs available to relax in. A trip to Kurobe Gorge will leave you feeling refreshed and in awe of all the beautiful nature! (Meiho J.H.S.)

Q43 How deep is Kurobe gorge?

A42 It was completed in 1925.

Chapter 7

Kurobe History



Hakone Shozu

Toyama's Delicious Water



Hakone Shozu is a spring in Ogyu. It has been selected as one of the famous water sources of Toyama. The name Hakone Shozu comes from the old name of the area Hakone Shinson/Shinmura. Hakone Shozu has been around since 1662 and has a long history. The current spring is a restoration of the old source. People from Kurobe come here to draw water for free. If you cook rice with this water, it becomes especially sweet and delicious. When you come to Kurobe please go to Hakone Shozu and drink this famous water. (Meiho J.H.S.)

Q44 Where is Hakone Shozu in Kurobe?

A43 1,500-2,000 meters.

100-Year Old Sakura

The Tree That has Been Watching Over Kurobe for a Century



This Yoshino cherry blossom was planted in 1907 by Masatami Morioka, a new teacher of Kurobe's local elementary school at the time. Today, you can still see it on the grounds of Kurobe City Hall. It has now been designated as a natural monument by the city. The average age of a Yoshino cherry blossom is about 50 to 60 years old, but this cherry blossom turns 117 years old this year, making it the oldest Yoshino cherry blossom tree in Toyama Prefecture. If you look closely, the trunk of the tree is covered with beautiful green moss. Every year in April when the cherry blossom tree is in full bloom, a cherry blossom viewing party is held. There you can enjoy zenzai, a traditional Japanese dish made with sweet red bean paste and mochi. Local people look forward to the cherry blossoms blooming every year and the tree has been recognized as one of the 70 best cherry blossom viewing spots in Toyama. Please come check out this natural wonder! (Meiho J.H.S.)

Q45 How old is this cherry blossom tree?

A44 In Ogyu.

Niiharu Shrine

The Sunken Village



A long time ago, there was an earthquake in Niiharu Village. It caused a tsunami, which sunk the village into the sea. At that time, it was called "The Sunken Village." This shrine has a large pond. There are many carp swimming in the pond. Niiharu Shrine has a torii gate like other shrines. Every new year, a lot of people come for "hatsumode" which is to pray for peace or their dreams coming true. We have Taimatsu (torch) Festival here every October. (Seimei J.H.S.)

Q46 What is the name of the festival held in Niiharu Shrine every October?

A45 117 years.

Mishima Shrine

One Thousand Years of History



Mishima Shrine is a historic shrine located on a large site in the Mikkaichi area. The history of Mishima Shrine dates back more than a thousand years and it was once revered by the Imperial Court. Of the 34 shrines in Toyama Prefecture, only Mishima Shrine has such a long history. The current shrine building is made of cypress wood and was built in 1942. It continues to be an important place for the people of Kurobe and as many as 40,000 people visit the shrine on New Year's Day every January. Please come to Mishima Shrine and experience the 1,000 years of history. (Meiho J.H.S.)

Q47 How many years of history does Mishima Shrine have?

A46 Taimatsu Festival.

Sho-okaku

Hokuriku's Historic Garden



Sho-okaku is a scenic spot located 250 meters from Kurobe-Unazuki Onsen station. It was built as a private residence in 1883 by Masafumi Kunishige, the first governor of Toyama prefecture. At Sho-okaku you can enjoy a beautiful circular garden filled with seasonal flowers and trees like the Japanese red pine. There is also a cozy tea room overlooking a pond filled with carp. Sho-okaku is designed in the Japanese architectural style called Sukiya. It is said to be the Ginkakuji, meaning silver pavillion, of the Hokuriku area as it closely resembles the temple in Kyoto of the same name. Please come here and experience the Japanese sense of beauty at Sho-okaku. (Meiho J.H.S.)

Q48 What is Sho-okauku called in Hokuriku?

A47 It has a history of over a thousand years.

Yamamoto House

Travel Back in Time to Life in the Edo Period



Yamamoto House is an old private house built in the Edo period about 230 years ago. Today, you can stay and experience the rustic old life here. Household goods and daily necessities from this time period are on display. There is also a spacious tea room with 21 tatami mats. At Yamamoto House you can try cooking rice with a kamado, a traditional Japanese stove. Sitting by the kamado you can hear the soft crackling of the fire and feel the radiant warmth. Rice made from a kamado is especially delicious. Enjoy traveling back in time at Yamamoto House!(Meiho J.H.S.)

Q49 How many tatami mats are there?

A48 The Ginkakuji of Hokuiku.



Wakaguri Castle

Kurobe's Hidden Gem



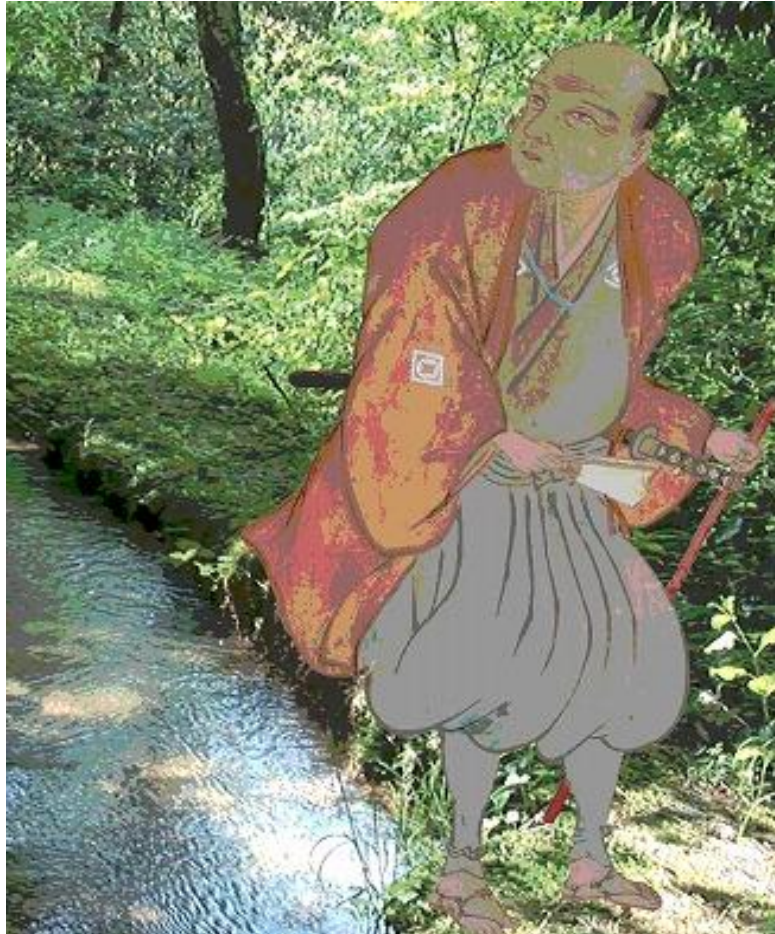
A long time ago there was a castle in the Wakaguri area of Kurobe. It existed from the period of the Northern and Southern Courts to the Sengoku period (1336-1467). Locally, it is known as Tachino Castle. Today, you can see the ruins of the castle where a large embankment stands. There is also a Tenmangu shrine at the high place of where the castle once stood. It has become a place of relaxation for the people of the neighborhood. There are many trees in the nearby paddy field which can be enjoyed in all seasons. Cherry blossoms are in full bloom in spring and bright red cluster amaryllis bloom in autumn. Please come to Wakaguri Castle and enjoy Kurobe's history and beauty. (Meiho J.H.S.)

Q50 What kind of flowers bloom in autumn?

A49 21 tatami mats.

Junikanno Canal

Lots of Beautiful Nature



Junikanno Canal is an irrigation canal made by Dosan Shiina about 160 years ago. It was used to get enough water to grow rice. It successfully used a siphon system. Thanks to it, people got rich rice fields. The sluice gate of this canal is located in Unazuki. (Seimei J.H.S.)

Q51 Where is the sluice gate of Junikanno Canal?

A50 Red cluster amaryllis flowers.

Chapter 8

Let's go out to play !



Ikuji Beach

Beautiful Sea



You can have fun fishing here and catch bigfin reef squid. You can see a beautiful sunset too. You can also enjoy skipping rocks across the water. Fireworks go off during the Ebisu Festival, which is held here at the end of every July. Also, viewing the beautiful mountains from the sea is a fantastic experience!(Seimei J.H.S.)

Q52 What can you fish at Ikuji Beach?

A51 In Unazuki.

Aramata Shore

A Beautiful Shore



Aramata Shore is a sandy beach on the back left of the Kurobe River mouth. Coastal erosion is severe in the east area of Namerikawa City where coastal alluvial fans are connected, and there are mainly sandy beaches. You can see coastal vegetation consisting of "oka hijiki" and "hamanigana" at Armata Shore.(Seimei J.H.S.)

Q53 Is Aramata Shore a sandy beach or a stone beach?

A52 Bigfin reef squid.

Oshima Campsite

Let's Go Camping!



This is Oshima Campsite in the area of Ishida, Kurobe. You can camp, barbeque, and play golf there. You can also stay overnight for 500 yen. When it is dark, you might be able to see a lot of twinkling stars in the sky. There is a super market nearby. Please come here if you have a chance. (Seimei J.H.S.)

Q54 What can you do in Oshima Campsite?

A53 It is a sandy beach.

Ishida Beach

A Beautiful Beach



Ishida Beach is very famous in Toyama prefecture. In the summer, you can swim and it is crowded with many beachgoers. The Marine Festa is held every early August and you can see fireworks displayed then. There is also a big campsite and a 45-hole golf course that Nippon Park golf association approved near here. (Seimei J.H.S.)

Q55 When can the fireworks displayed be seen?

A54 You can camp, barbeque, and play golf.

Ishida Fish Arena

Everyone Can Enjoy Fishing



Ishida Fish arena rents out fishing equipment, so you can easily enjoy fishing here. You can catch various fish, such as horse mackerel in July and bigfin reef squid in October. When you come to Kurobe, please enjoy fishing at Ishida Fish Arena.(Seimei J.H.S.)

Q56 What month can you catch squid here?

A55 Every early August.

Oshima Park Golf Site

Everyone Can Enjoy This Golf Course



Park-golf is different from standard golf, and a lot of people like it in Japan. There is a park-golf site in Ishida, Kurobe. Its courses are officially approved by Nippon Park-golf Association. You can rent park-golf equipment here. You can enjoy playing regardless of your age. It is fun even for beginners. You can also play it in the gym during rainy weather. (Seimei J.H.S.)

Q57 Who approves the courses of Oshima Park-golf site?

A56 In October.

Nakanokuchi Park

A Park Rich in Nature



Nakanokuchi Park is located deep in the mountains of Unazuki. Here you can enjoy various sports such as archery, baseball, soccer, and tennis. You can also ride your bike around the large fields or rent an interesting two-seater bicycle. It is nice to feel the wind rushing past as you ride around the park. In the past, Japan's national archery competitions were held here. There is a lot of nature in the area which can be enjoyed all year-round. Nearby, there is also a large river and a campsite. The bright red Aimoto Bridge can be spotted in the distance. (Meiho J.H.S.)

Q58 What is the name of the red bridge nearby?

A57 The International Park-golf Association does.

Miyano Athletic Park

A Famous Place for Cherry Blossoms



Miyano Athletic Park was completed in 1994. It is located about 120 meters above sea level so you can see a spectacular view of the Kurobe River alluvial fan. From afar, you can see a signboard on the side of the mountain which says “Famous Water Village”. This is because Kurobe is famous for clean water. In spring, about 800 cherry trees bloom and you can enjoy cherry blossom viewing while eating delicious food from stalls. The fallen petals paint the mountain pink and it is very beautiful. The park features many athletic fields including a running track, a baseball field, tennis courts, a gymnasium and a sumo ring. This is one of the most popular places in Kurobe that both adults and children can enjoy. (Meiho J.H.S.)

Q59 About how many cherry trees are there?

A58 Aimoto Bridge.

Unazuki Ski Resort

The First Ski Resort in Toyama with a Lift



Unazuki Ski Resort is an old ski resort that opened in 1956. It was the first ski resort in Toyama Prefecture to have a lift installed. It is a 5-minute walk from Unazuki Onsen station making it easy to access by train. The ski resort has very affordable lift tickets and you can also rent ski and snowboard equipment inexpensively. Many people gather here in the winter season. It is a perfect place for families as children can play safely in the kids' space.(Meiho J.H.S.)

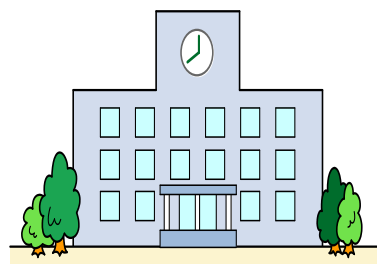
Q60 What year was Unazuki Ski Resort established?

A59 About 800.



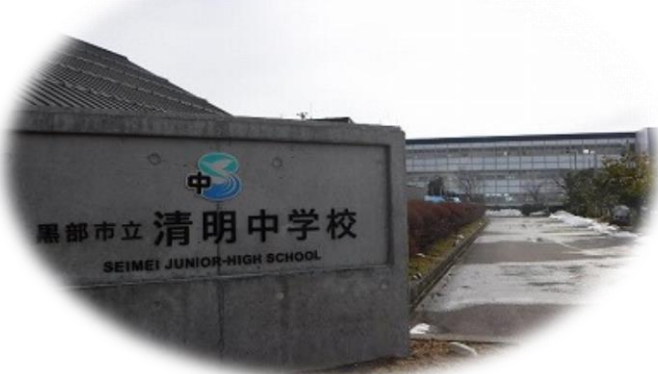
Chapter 9

Junior high schools in Kurobe



Seimei Junior High School

A Fresh and Bright Junior High School



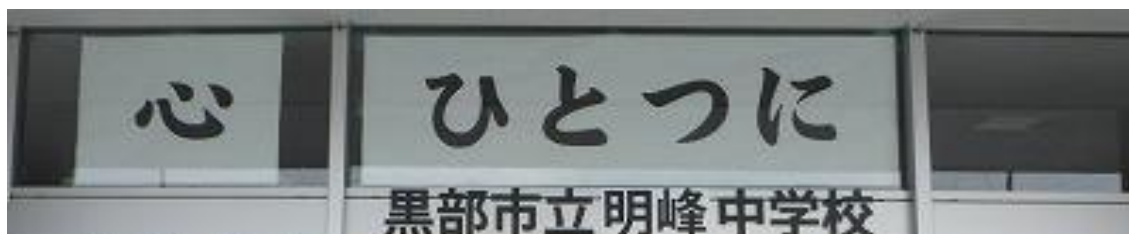
This is one of the two junior high schools in Kurobe. Seimei JHS is located in Nakashin. There are 498 students, and 15 club activities for the students to enjoy. It was established 3 years ago. Seimei students are bright and active. There are many events such as the Sports Festival and Chorus Contest.(Seimei J.H.S.)

Q61 How many students does Seimei Junior High School have?

A60 In 1956.

Meiho Junior High School

A Bright School for Bright Students



Meiho Junior High School is a new school that opened in 2020. The school building has many windows which creates a bright atmosphere. From the windows you can see tall mountains in the distance. Meiho School is named after the beauty of these surrounding mountains, 明 (mei) meaning bright and 峰 (ho) meaning mountain peaks. At Meiho, students generally learn nine subjects. These subjects include: Japanese language, mathematics, science, and more! Moral education and English conversation classes are also included in the curriculum. There are 23 types of club activities, including an archery club. Lunch is eaten in the classroom every day. (Meiho J.H.S.)

Q62 How many subjects do students generally learn?

A61 It has 498 students.



If you introduce Kurobe in English, ask him to sign it!

A62 9 subjects.

O

0

(裏書き)

0

0

#N/A

#N/A

#N/A

#N/A
0

Chapter 9

Junior high schools in Kurobe

